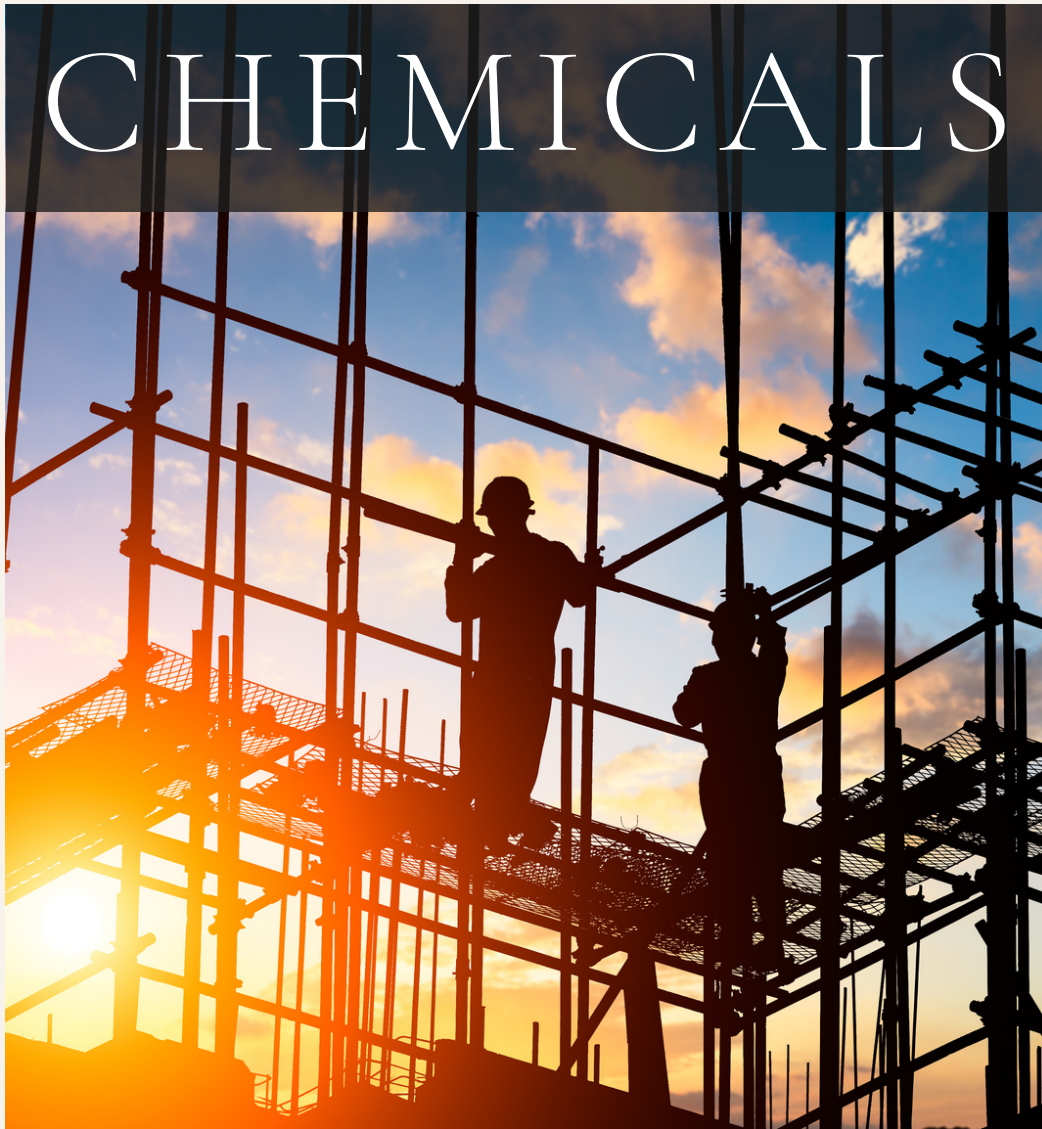


CONSTRUCTION



WATERPROOFING / ADMIXTURES / SEALANTS / FLOORING / COATINGS

THIS PAGE HAS BEEN INTENTIONALLY LEFT BLANK

CONTENTS

3

WATERPROOFING SOLUTIONS

4

SPECIALTY COATINGS

8

ANTI-CORROSIVE COATINGS

14

INDUSTRIAL GROUTS AND REPAIR

17

FLOORING SOLUTIONS

17

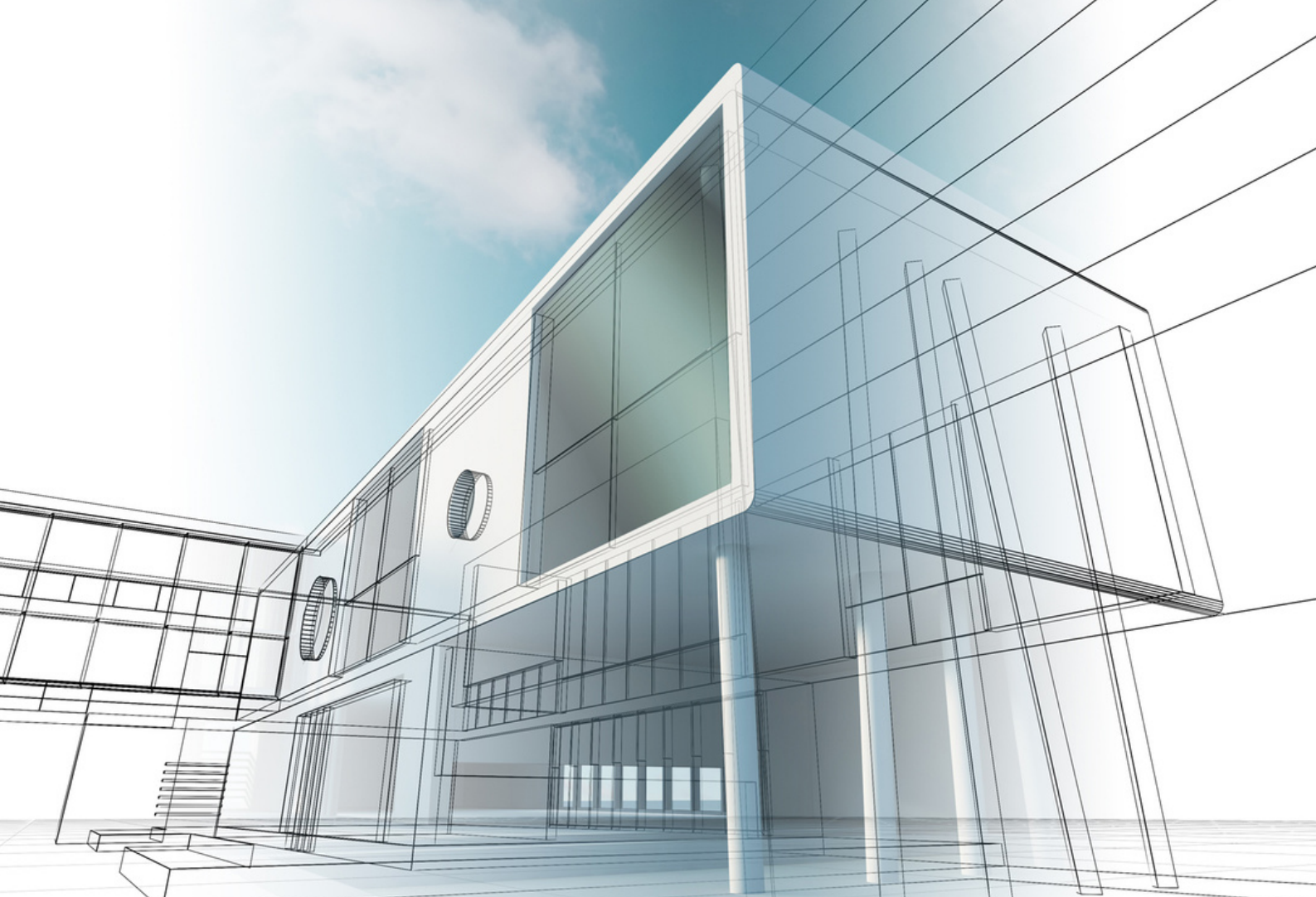
POLYURETHANE COATINGS

17

JOINT SEALANTS

17

ADMIXTURE



ABOUT US

Stalwart Advance Material Inds is a leading provider of high-quality speciality chemicals for the construction industry. With a focus on innovation, sustainability, and customer satisfaction, we are committed to delivering exceptional products and services to our clients around the world.

We provide a wide range of advanced solutions designed to improve the performance, durability, and safety of concrete structures. From waterproofing and curing agents to admixtures and sealers, our products are specifically formulated to meet the unique needs of builders, architects, engineers, and contractors.

Whether you're working on a residential or commercial project, our Construction Chemicals product line has everything you need to achieve outstanding results. With Stalwart Advance Material Inds, you can trust that you're getting the best possible solutions for your construction needs.



WATERPROOFING SOLUTIONS

Introducing our Waterproofing Solutions product line, designed to provide excellent protection against moisture, water ingress, and atmospheric impurities. Our range of high-performance products includes AquaBan, AquaBlock, AquaBond-Primer, BituGuard, QuickShield, AquaShield-RB, AquaCoat-ACR, PolyShield-WP, AquaBond, ConcreSeal, AquaFlex, and PolyCrete. Whether you're waterproofing terraces, parapet walls, outer and inner walls, basements, roofs, or tanks, our range of versatile products has got you covered. With superior adhesion, scratch resistance, and abrasion resistance, our waterproofing solutions ensure long-lasting protection and superior performance.

AQUABAN

White Black Terracotta Brick Red

AquaBan is a transparent waterproof chemical + primer, designed to seal concrete and other absorbent surfaces. This single-component transparent coating acts as a bonding agent for Blanc Water Proofer and other waterproofing products. Additionally, AquaBan can be used as a primer or bonding agent for various waterproofing applications.

AQUABLOCK

White Grey Terracotta

AquaBlock is a high-performance, ready-to-use, 100% acrylic waterproofing solution that forms a strong and scratch-resistant film. It effectively seals hairline cracks, providing an efficient barrier against moisture, water and atmospheric impurities. It is ideal for terrace waterproofing, as well as for use on parapet walls, outer and inner walls, and basements, and as an overcoat on AC sheets, GI sheets and insulated roofs.

AQUABLOCK - PREMIUM

White Grey Terracotta

AquaBlock - Premium is a premium waterproof coating designed to protect against moisture, UV radiation, and atmospheric impurities. This high-performance product is formulated with pure acrylic elastomeric polymers that provide excellent adhesion, scratch resistance, and abrasion resistance. AquaShield is ideal for waterproofing old and new built-up roofs, as well as parapet walls, outer and inner walls, basements, AC sheets, GI sheets, and PUF-insulated roofs.

AQUABOND - PRIMER

White Black Terracotta Brick Red

AquaBond - Primer is a specially formulated bonding agent primarily used for AquaShield-Premium, but can also be used as a primer for other waterproof chemicals. It creates a strong bond between the surface and the waterproof coating, ensuring long-lasting protection against moisture and water damage.





BITUGUARD

Black

BituGuard is a specialized cold-applied bituminous bonding coat that provides superior adhesion for bitumen-based waterproof coatings. Its unique formulation seals porous surfaces, ensuring excellent bonding strength for long-lasting protection against water ingress. Ideal for use in various applications, BondoBit is the ultimate solution for efficient and effective waterproofing.

QUICKSHIELD

Black

QuickShield is a highly cost-effective and short-term waterproofing system that is suitable for various types of treated and untreated surfaces. It provides an ideal economic solution for preventing quick and easy repairs for waterproofing of flat concrete roofs, pitched roofs, AC/GI sheet roofs, gutters, iron, steel, masonry or concrete surfaces.

AQUABLOCK-RB

Black

AquaBlock-RB is a ready-to-use, rubberized waterproof coating based on synthetic rubber and organic chemicals. This single-component, black coating is suitable for application on dry or damp surfaces, making it ideal for waterproofing terraces, parapet walls, AC/GI sheets, gutters, roofs of buses, car chasis, and more. It creates a strong, durable barrier against water and is especially useful for coating both inside and outside water tanks.

AQUAGUARD

Black

AquaGuard is a polymer-modified bituminous waterproofing membrane, specially designed to provide excellent waterproofing for concrete decks and bridges. Its superior quality and durability make it the perfect choice for protecting concrete structures from the corrosive effects of de-icing salts. In addition, BridgeGuard-WP can also be used for basement waterproofing to prevent capillary action and waterproofing applications for reservoirs, tunnels, and car parking areas.

AQUACOAT-ACR

White

AquaCoat-ACR is a high-quality, pure acrylic waterproof coating designed to provide excellent waterproofing protection to various surfaces. This product can be used for terrace waterproofing, parapet walls, outer and inner walls, basements, and as an overcoat on AC sheets, GI sheets, and PUF insulated roofs.

POLYSHIELD - WP

Grey Cementitious Finish

PolyShield - WP is a pure acrylic polymer-based liquid that is specially formulated to make polymer-modified cementitious-based waterproof coatings. It offers a cost-effective solution for polymeric waterproofing needs and is highly recommended for waterproofing terraces, toilets, bathrooms, sunken slabs, basements, and even water tanks. It can be used on floors and external walls, as well as the sunken portions of bathrooms, toilets, balconies, and other areas.

AQUABOND

Grey Cementitious Finish

AquaBond is an advanced acrylic polymer-based liquid, designed to create polymer modified cementitious waterproof coatings and repair solutions. It is highly recommended for use as a bonding coat between old and new concrete and plaster, as well as for repairing plaster and concrete. AquaBond is also an excellent choice for waterproofing systems, including terraces, roofs, and walls. Its versatile properties make it suitable for a wide range of applications, both indoors and outdoors.

CONCRESEAL

Grey Cementitious Finish

ConcreSeal is a versatile concrete sealer that can be used for both spalled concrete repair and waterproofing. Its advanced formula makes it an ideal choice for repairing beams, columns, chajjas, and parapets. It also acts as a waterproofing agent for terraces, sunken slabs, chajjas, and parapets. Additionally, ConcreSeal can be used as a bonding agent for tiles, panels, bricks, and stones, making it a multi-purpose solution for a range of applications.





AQUAFLEX

Grey Cementitious Finish

AquaFlex is a heavy-duty, two-component, polymer-modified coating that provides excellent flexibility and protection against water and chemicals. It is an ideal solution for the waterproofing of tanks used in fisheries, portable water containers, reservoirs, swimming pools, silos, and sumps. Additionally, it can be used for foundation protection, reinstatement of tie-bar holes, and protection against brackish water.

POLYCRETE

Grey Cementitious Finish

PolyCrete is a high-adhesion, two-component, polymer-modified cementitious coating that is ideal for use on steel and concrete surfaces. It can be applied to a wide variety of surfaces including roofs, portable water tanks, sunken bathroom slabs, kitchens, basements, retaining walls, and structural surfaces of cellars, concrete roofs, slabs, floors, balcony floor slabs, water tanks and swimming pools.

POLYCRETE-ACR

Grey Cementitious Finish

Polycrete-ACR is a high-quality acrylic-based waterproofing chemical. It is specifically designed for use in waterproofing bathrooms, sunken slabs, kitchens, basements, concrete roofs, slabs, and floors. Its advanced formula ensures maximum protection against water seepage and moisture damage.

AQUABLOCK-ACR

White Grey

AquaBlock-ACR is a high-performance, single-component, water-based waterproof coating. It contains pure acrylic and microfiber and is specially formulated to create a strong, scratch-resistant film that seals hairline cracks. This three-coat, high-build system acts as a negative barrier against moisture, water, and other atmospheric impurities. It is primarily used as a waterproof coating on terraces, but can also be applied to parapet walls, outer and inner walls, and basements, and as an overcoat on AC Sheets, GI Sheets, and PUF-insulated roofs.

THIS PAGE HAS BEEN INTENTIONALLY LEFT BLANK



SPECIALITY COATINGS

Introducing a range of specially formulated coatings designed to provide superior protection and aesthetics to your building. From PrimeBond, a binder primer for plastered and painted surfaces, to CourtShield, a flexible coating for tennis and basketball courts, each product in this line serves a specific purpose to meet your building's needs. Whether you're looking for waterproofing, heat reflection, anti-dampness, or simply enhancing the appearance of your masonry surfaces, Stalwart Exclusive has you covered. With its advanced formulations, the Stalwart Exclusive product line provides long-lasting solutions to common building problems, ensuring that your building stays protected and beautiful for years to come.



PRIMEBOND

White

PrimeBond is a specially formulated single component primer that acts as a binder over plastered and painted surfaces. It can be used on surfaces such as parapets, chajjas, and external walls of buildings. It serves as a primer coat for DampShield and other paints, distempers. PrimeBond can also be applied over lime plasters and as a primer before cement-based paints.

ACRYCOAT

Various Shades

AcryCoat is a waterborne acrylic elastomeric polymer designed for masonry coatings. It has exceptional tint retention and durability on masonry substrates. It is ideal for external surfaces, providing both decorative and waterproof properties. MasonCoat can be applied on all types of masonry surfaces, including concrete blocks and bricks.

DENSAGUARD

White

DensaGuard is an advanced anti-condensation coating that effectively inhibits condensation by absorbing moisture and enhancing insulation. It provides a long-lasting solution to condensation-related problems, such as dampness, mold, and corrosion. DensaGuard is suitable for various applications, including industrial facilities, warehouses, cold storage, and other areas where condensation is a concern.

EPOCOAT

White

EpoCoat is a two-component, water-based epoxy coating that provides effective protection against rising dampness, efflorescence, and negative hydrostatic pressure. It is specifically designed for interior damp-proofing of external walls, as well as for use on walls with persistent acute dampness. EpoCoat is also recommended for use as a damp-proofing coating in the pre-construction stage on sunken slabs, basements, lift pits, water tanks, and swimming pools.





EPOGLOSS

Clear Glossy Coat

EpoGloss is a two-component, epoxy-based, colourless liquid coating that can be applied on various surfaces such as wood, concrete, metal, stone, household articles, furniture, wooden flooring, bathroom doors, stone artefacts, metal objects, ceramic tiles, and more. It is a versatile coating that provides a high gloss finish and a hygienic look.

THERMOSHIELD

White

ThermoShield is a specially formulated heat-reflective coating that can be applied to various masonry surfaces, including external walls of buildings, roofs, and parapets. It is also suitable for industrial roofs made of GI and AC sheets. The coating helps to reflect the heat from the sun and reduce the temperature inside the building or structure, thus improving energy efficiency and reducing cooling costs.

PERMAPROTECT

Clear Coat

PermaProtect is a low viscosity, solvent-based sealer coating that penetrates and protects all types of external surfaces. Its versatility makes it ideal for a wide range of applications, including heritage buildings, brick facades, concrete surfaces, and other porous building materials. Its colorless formula allows it to be used on a variety of surfaces without altering their appearance. Use PermaProtect to protect and preserve the integrity of your building's exterior for years to come.

DAMP SHIELD

White

DampShield is a 100% acrylic anti-dampness coating that provides a single-component, ready-to-use solution for moisture and water protection. This coating acts as a barrier against dampness and can be used for both interior and exterior applications. Ideal for various surfaces, DampShield is a reliable choice for ensuring protection against water damage.

POLYSHIELD - ACR

Various Shades

PolyShield - ACR is an acrylic-based, decorative weatherproof coating that provides excellent protection to all masonry surfaces against weathering. This single component coating is ideal for exterior applications as it is both waterproof and weatherproof. PolyShield - ACR is suitable for all types of masonry surfaces including concrete blocks, bricks, and more. Its decorative properties make it an excellent choice for enhancing the aesthetics of buildings while providing long-lasting protection against weather damage.

THERMOGUARD

White

THERMOGUARD is a specially formulated heat-reflective coating designed to save energy costs by reflecting heat. It can be applied on a variety of masonry surfaces, including external walls, roofs, and parapets of buildings, as well as industrial roofs made of materials such as GI and AC Sheets. By reducing the absorption of heat, THERMOGUARD helps to keep interiors cooler, making it an ideal choice for buildings in hot climates.

AQUABLOCK - PLUS

White Grey Terracotta

AquaBlock-Plus is a high-performance, white-coloured, single-component, pure acrylic waterproof and heat-reflective coating. It is designed to provide excellent waterproofing and heat-reflective properties, making it ideal for use on terraces, parapet walls, outer and inner walls, basements, and roofs made of AC sheets, GI sheets, and PUF insulation.

COURTSHIELD

Various Shades

CourtShield is a high-quality, 100% acrylic coating specially designed for tennis and basketball courts. It is a flexible and hard-wearing coating that provides excellent resistance to both acid and alkaline conditions, ensuring long-lasting protection for your court. CourtShield is also water-resistant, making it ideal for outdoor use.





ANTI-CORROSION COATINGS

Introducing our Anti-Corrosive Coatings product line, specifically designed to protect metal surfaces in various industrial applications. Our line includes EpoPrime-ZN and EpoPrime-GI, both two-component epoxy primers offering exceptional adhesion and corrosion resistance. EcoPrime-RO is a high-quality, flexible, and hard-wearing paint ideal for harsh environments, while CorroShield provides excellent protection against corrosion in hydraulic steel construction. EpoCoat-GLOSS is a two-component epoxy enamel paint coating with a high gloss finish, and RustCoat is a unique chemical liquid coating that transforms rust into a phosphate coating. Our speciality product is designed to safeguard the interior surfaces of tanks, steel pipes, sewage and drainage lines, and other similar applications.



EPOPRIME - ZN

Grey

EpoPrime- ZN is a two-component, zinc-rich epoxy primer that offers exceptional cathodic protection to the base metal and prevents creeping corrosion under the coating. It is an ideal coating for use on crest gates, floating roofs or tanks, structural steel in docks, refineries, buildings, and other industries, as well as structural equipment such as cranes of chemical handling units, bridges, and jetties.

EPOPRIME - GI

Silver Grey

EpoPrime - GI is a two-component epoxy primer that has been specially formulated to provide excellent adhesion to galvanized iron surfaces and aluminium. Its unique formulation ensures superior bonding, as well as excellent corrosion resistance, making it an ideal primer for use in various industrial applications such as chemical handling units, refineries, bridges, and jetties. With EpoPrime - GI, you can rest assured that your metal surfaces are protected from corrosion and have improved durability for long-lasting performance.

EPOPRIME - ZNCR

Yellow

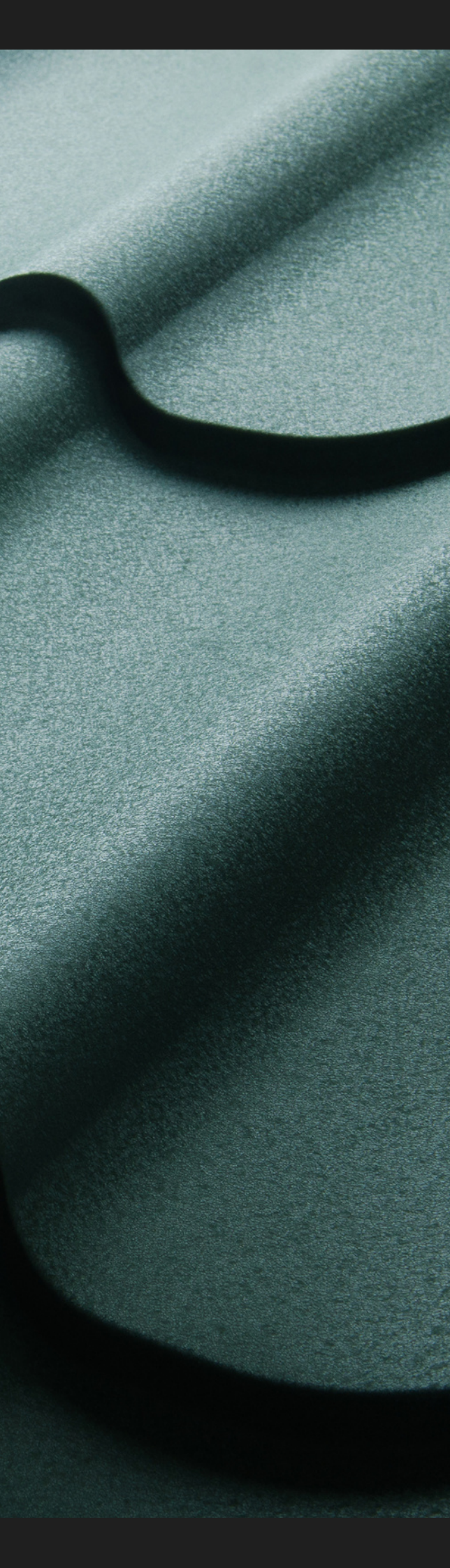
EpoPrime - ZNCR is a two-component, containing zinc chromate pigment. It has excellent adhesion to steel and galvanized surfaces.

ECOPRIME - RO

Red

EcoPrime - RO is a two-component, epoxy-based primer with a red oxide colour. It is specifically designed to provide excellent adhesion to steel and other metal surfaces, making it an ideal choice for use in various industrial applications. With its high-quality formulation, EcoPrime - RO offers superior corrosion protection and helps to extend the lifespan of metal structures.





FLEXIGUARD - CRP

Various Shades

It is a high-quality, flexible and hard-wearing paint, specifically designed for use in harsh environments where conventional paints may fail. This paint is ideal for use in dairy parlors, silage pits, and sewage installations due to its excellent resistance to water in both acidic and alkaline conditions. It can also be used as a swimming pool paint on properly treated surfaces.

CORROSHIELD

Black

CorroShield is a coal tar epoxy coating that provides excellent protection against corrosion in hydraulic steel construction and other industrial applications. It is commonly used as an inhibitor coating for sluices, harbour installations, steel sheet piling, bridges, and bridge decks. It is also effective as an anti-corrosive coating for concrete, plaster, iron, and steel, making it ideal for use in sewage works, such as coating sewage pipes, sewage treatment plants, and decomposition silos. With its superior corrosion resistance, CorroShield helps extend the service life of structures and equipment while reducing maintenance costs.

EPOCOAT - GLOSS

Various Shades

EpoCoat - GLOSS is a two-component epoxy enamel paint coating that provides a high gloss finish. It is commonly used as a top coat after applying an epoxy anti-corrosive primer for added protection. It is highly recommended for applications that require resistance to chemicals such as storage tanks, machinery and equipment, conveyor systems, and pipelines in industries including fertilizer plants, petrochemical complexes, pharmaceuticals, dairies, offshore structures, abattoirs, and electronic industries.

RUSTCOAT

Clear

RustCoat is a one-of-a-kind chemical liquid coating that transforms rust on metal surfaces into a phosphate coating, making the surface ready for painting. When applied to rusty surfaces, it reacts with the rust and converts it into a protective layer that prevents further corrosion. RustCoat is ideal for use on metal structures such as fences, gates, bridges, and equipment that require a smooth and paintable finish.

CORROGUARD

Yellow

This specialty product offers effective anti-corrosive protection for a wide range of surfaces and substrates. It is typically used for safeguarding the interior surfaces of tanks, steel pipes, sewage and drainage lines, and other similar applications.





INDUSTRIAL GROUTS AND REPAIR

Introducing our Industrial Grouts and Repair product line - a comprehensive range of high-quality products designed to provide durable and long-lasting solutions for all your grouting and repairing needs. From BondCrete, a solvent-free crack injection material, to ChemFix, a versatile block fixing adhesive, our products are specially formulated to cater to a wide range of applications in the construction industry. Whether you're looking to repair cracked concrete floors, fill gaps between tiles or fix blocks securely in place, our product line offers reliable and efficient solutions to meet all your needs.

BONDCRETE

BondCrete is a solvent-free crack injection material that provides permanent bonding of concrete cracks. It is an ideal solution for repairing cracked concrete floors, walls, tanks, and seawalls. BondCrete can be easily injected into cracks and honeycombing in concrete and masonry, making it an effective and efficient solution for repairing damaged structures. With its strong bonding properties and ease of use, BondCrete is an essential product for anyone looking to repair and strengthen their concrete structures.

EPOSHIELD

Off White

EpoShield is a three-component, free-flowing grout made of epoxy resin. It is specifically designed for high-strength grouting and fixing of various structures such as anchors, crash barrier posts, fence and railing posts, machine bases, vibrating machines, pumps and presses, bridge bearings, mechanical joints like roads and bridges, light rail and permanent way in tunnels, over bridges, starter bars, and tie rods. With its exceptional bonding strength, it provides a long-lasting and durable solution for various grouting and fixing applications.

NANOCRETE

MicroCrete is a highly efficient, one-component micro-concrete that offers free-flowing properties, making it ideal for repairing various types of concrete structures. It is specially formulated to restore damaged concrete surfaces, ensuring a durable and long-lasting repair solution.

FLEXGROUT

FlexGrout is a versatile non-shrink cementitious grout that can be used for various applications in the construction industry. It can be easily mixed with a controlled quantity of water to achieve a free-flowing or paste-like consistency. FlexGrout is ideal for bedding precast units in walls, roofs, and slabs, as well as anchor bolts, machinery foundations, turbines, generators, and filling holes in scaffolding supports and framework ties. It is a reliable and durable solution for all your grouting needs.





MORTAFLOW

MortaFlow is an acrylic-based mortar available in single and two components. It is ideal for quickly and effectively filling concrete floors in factories with heavy traffic, loading docks, and cold storage, as well as repairing staircases made of concrete, marble, or granite. It can also be used for repairing expressways, highways, ramps, driveways, bridge decks, aprons, runways, large tanks, reservoirs, sumps, aqueducts, and other structures.

TILESHIELD

Various Shades

TileShield is a single-component product that contains polymers, UV-resistant properties and special additives. It has exceptional adhesion properties and is specifically designed to fill gaps between tiles, mosaics, marble and natural stones. With its high-quality formulation, TileShield ensures long-lasting bonding and provides an aesthetically pleasing finish to any tiled surface.

GROUTSHIELD

Grey

GroutShield is a high-build, three-component repair material that is ideal for quick and efficient repair work on concrete, bitumen, and other horizontal surfaces. Its fast-setting formula allows for minimal traffic interruption, making it perfect for use in busy areas. It is commonly used for repairs on concrete, kota, trimix, and bitumen surfaces in factories, airfields, and roads.

CHEMFIX

Grey Colour Semi Liquid Paste

ChemFix is a grey-colored, semi-liquid or paste-like adhesive that is specially formulated using a blend of high-quality chemicals. It is designed for fixing blocks securely in place and can be used for a variety of applications, such as construction, masonry work, and DIY projects. This adhesive offers excellent bonding strength and durability, ensuring that blocks remain firmly in place. It is easy to apply and can be used on various surfaces, making it a versatile and reliable solution for all your block fixing needs.

THIS PAGE HAS BEEN INTENTIONALLY LEFT BLANK



FLOORING SOLUTIONS

Introducing our flooring solutions product line, designed to meet your specific flooring needs. Our line includes EpoBond, an advanced bonding agent ideal for epoxy coatings and finishes. For light traffic areas that require hygienic conditions, we have EpoFloor, while EpoFloor - Plus is perfect for areas that demand high abrasion and chemical resistance. InstaCoat provides instant waterproofing and anti-skid properties for various surfaces prone to water leakage and seepage. EpoFix Mortars are available in self-levelling and trowel grade variants and offer excellent bonding properties for concrete structures. Finally, our Degreaser is specially designed to remove oil and grease from surfaces in factory environments. These versatile and durable solutions are perfect for a range of settings, including industrial floors, car park decking, pedestrian walkways, and more.



EPOBLOCK

Clear

EpoBlock is a specialized flooring compound that acts as a primer for the application of epoxy systems. Its advanced formula provides excellent bonding properties and promotes adhesion to various surfaces. It serves as an ideal bonding agent for the application of epoxy coatings and finishes.

EPOFLOOR

Various Shades

EpoFloor is a two-component epoxy resin-based coating specially designed for areas with light traffic where dust-free and hygienic conditions are crucial. It is an ideal choice for pharmaceutical and electronic factories, dairies, and operation theatres where maintaining a hygienic environment is critical. Additionally, it can also be applied in pre-fabricated homes, containers, tank farms, and finishes.

EPOFLOOR - PLUS

Various Shades

EpoFloor - Plus is a self-leveling, two-component epoxy-based solution designed for areas where high abrasion and chemical resistance are required, as well as maintaining a dust-free and hygienic environment. Ideal for use in a variety of settings, including garages, showrooms, exhibition halls, hospitals, food and pharmaceutical industries, factories, warehouses, workshops, sports centres, and aircraft hangars.

INSTACOAT

Cement Grey

InstaCoat is an instant, cementitious coating that provides effective waterproofing and anti-skid properties. It is ideal for use on both internal and external masonry walls, R.C.C. slabs, tanks, basements, swimming pools, parking lots, silos, sumps, and other surfaces prone to leakage, dampness, and seepage of water. Its unique anti-skid formula provides a safe walking surface, even when wet. InstaCoat is easy to apply and provides long-lasting protection against water damage.





EPOMORTAR

Cement Grey

EpoMortar is a range of epoxy-based mortars available in self-levelling and trowel-grade variants. The self-levelling mortar is ideal for floor topping, cavity fillings, and bedding, while the trowel grade is suitable for vertical surfaces. They are commonly used for repairing vertical columns, fixing bearings, repairing honeycomb problems in RCC, and fixing acid-proof tiles in chemical plants. EpoFix Mortars provide excellent bonding and are suitable for repairing various concrete structures such as tanks, pipes, roads, airport runways, and foundations of heavy vibrating machinery.

EVOSURE

Clear

EvoSurf is a chemical cleaner specially designed to remove grease and oil from surfaces in factory environments. It is formulated with complex solvents and does not contain harsh acids, making it safe to use without worrying about immediate rusting. This cleaner is ideal for cleaning oily floors or any surface that needs to be oil-free.

FLEXIGUARD

Various Shades

FlexiGuard is a versatile and durable flooring solution that is formulated with a complex blend of urethane polymers. This coating system provides exceptional resistance to abrasions, impacts, and chemicals while also offering a high degree of flexibility. It is ideal for use in a variety of settings such as industrial floors, car park decking, warehouse floors, pedestrian walkways, food processing plants, helipads, and trafficable roofs. The coating can also be used in the dairy and hotel industry for its durability and non-slip properties.

THIS PAGE HAS BEEN INTENTIONALLY LEFT BLANK



POLYURETHANE COATINGS

Introducing our Polyurethane Coatings product line, designed to provide durable protection and exceptional performance for a range of applications. AquaCoat is a single-component waterproof coating perfect for use in tanks, swimming pools, and podiums. PolyGuard is a versatile two-component coating suitable for new construction and maintenance work, providing excellent protection for various substrates. Finally, GermShield is a two-in-one decorative and protective coating, ideal for use in pharmaceutical industries, hospitals, and the food industry. All products in this line are designed to provide exceptional protection and durability, making them the perfect choice for a range of industries and applications.



AQUACOAT - PU

Clear

AquaCoat is a high-quality, single-component polyurethane waterproof coating designed for use in a variety of applications, including tanks, swimming pools, podiums, and more. Its advanced formulation provides exceptional water resistance, making it perfect for projects that require long-lasting protection against moisture.

POLYGUARD

Various Shades

PolyGuard is a versatile two-component polyurethane coating that can be used for both new construction and maintenance work. It provides excellent protection for a variety of substrates including concrete, cementitious surfaces, asbestos, GI sheets, MS, and all metals. Its durable and flexible properties make it ideal for use in a range of industries, including construction, manufacturing, and infrastructure.

GERMSHIELD

Various Shades

GermShield is a two-in-one decorative and protective coating that provides an anti-bacterial layer on almost all surfaces. Its smooth and satin finish makes it ideal for use on horizontal and vertical surfaces, such as those found in pharmaceutical industries, hospitals, hotel kitchens, health clubs, spas, and the food industry. It is also perfect for revamping old and worn-out surfaces, such as bath tubs and ceramic tiles in bathrooms, giving them a new and fresh look.





JOINT SEALANTS

Introducing our product line of Joint Sealants, designed to provide reliable and long-lasting solutions for all your construction needs. Our line includes PlastoSeal, Permacryl, TechSeal, PolySeal-PS, PolySeal-ACR, TileBond, CrackFix, and FlexiSeal. PlastoSeal is a premium plasto-elastic sealant that can fill gaps and cracks in various structures and surfaces, while BituFill is a high-performance rubberized joint filler that prevents future damage. Our CrackFill is a polymer-modified powder material that fills cracks in plastered surfaces and levels out undulations in walls and ceilings. PolySeal-PS and PolySeal-ACR are two-part joint sealants that provide excellent resistance to environmental factors, while TileBond is an ideal solution for fixing tiles on both walls and floors. CrackFix is a plasto-elastic acrylic sealant that seals cracks and joints, and FlexiSeal is a solvent-based sealant that combines the durability of acrylic with the elasticity of rubber.

PLASTOSEAL

White

PlastoSeal is a premium, plasto-elastic sealant designed to provide a durable, long-lasting seal for a wide range of surfaces and structures. Its one-component formula makes it easy to use and apply, while its high-quality acrylic composition ensures superior adhesion and elasticity. Ideal for filling cracks in masonry, concrete, terraces, precast blocks, slabs, and brick linings, PlastoSeal can also be used to fill gaps between structures such as aluminium sliding windows, wooden frames, doors, and baseboards. It is also perfect for sealing joints of GI/Cement pipes, AC/GI sheets, gutters, and flashings, providing excellent water and weather resistance.

PERMACRYL

Black

PermaCryl is a high-performance rubberized joint filler compound designed to prevent future maintenance resulting from exposed and untreated cracks. It is used to fill cracks of up to 5mm in asphalt surfaces, CI/cement drainage pipes, AC/GI sheets, gutters, joints, masonry surfaces, terraces, basements, concrete precast blocks, slabs, brick linings, water tanks, irrigation canals, and more. Its superior properties provide a long-lasting and durable solution to protect surfaces from further damage due to weather and traffic conditions.

TECHSEAL

White

TechSeal is a polymer modified powder material designed to efficiently fill cracks in plastered surfaces. It can be used to fill cracks of various sizes in both horizontal and vertical areas of buildings and structures. Additionally, it can be used to level out any undulations in unplastered or plastered ceilings and walls prior to painting. CrackFill is an ideal solution for providing a smooth finish to brick, stone, and wood works.





POLYSEAL - PS

Black

PolySeal - PS is a high-quality two-part joint sealant that is based on a high grade of synthetic rubber. It is specially formulated with polysulfide to provide outstanding resistance to U.V. light, chemical attacks, industrial/atmospheric pollution and other environmental factors. This joint sealant is ideal for use in expansion joints in reinforced concrete structures such as bridges, expressways, reservoirs, runways, basements, subways and water retaining structures. It is designed to provide excellent adhesion and flexibility, ensuring long-lasting and reliable performance.

POLYSEAL - ACR

Black Cement Grey

PolySeal - ACR is a high-quality, two-component acrylic polymer modified sealant with excellent adhesion. It is specially designed for all types of joints in precast blocks, slabs, paving blocks, and building construction. It can also be used in airports, highways, concrete rain pipes, sewers and for filling cracks in RCC structures. Its superior adhesion makes it ideal for both vertical and horizontal joints.

TILEBOND

Grey

TileBond is a high-quality dry powdered adhesive, specially designed for fixing ceramic, glazed tiles, mosaic, marble, granite and stone tiles to concrete surfaces on both walls and floors. It is an ideal solution for laying new tiles on old tiling, as well. With its superior bonding strength, TileBond ensures long-lasting adhesion of tiles to the surface.

FLEXISEAL

White

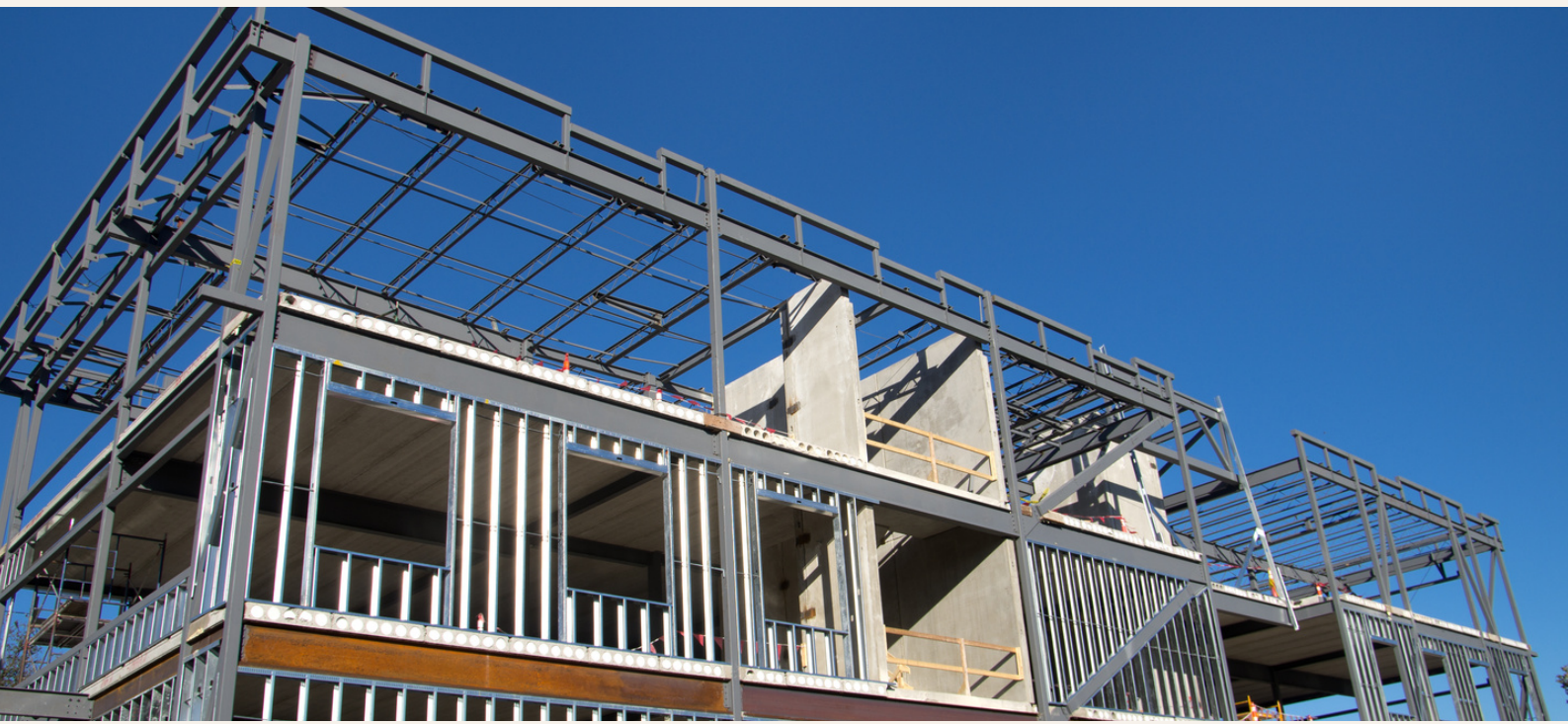
FlexiSeal is a high-quality, solvent-based sealant that combines the durability of acrylic with the elasticity of rubber. It is an excellent choice for sealing cracks and joints both indoors and outdoors, providing the necessary flexibility to accommodate movement. Suitable for a wide range of substrates, FlexiSeal is an ideal solution for sealing gaps in windows, doors, skirting boards, and other surfaces that require a degree of flexibility.

CRACKFIX

White

CrackFix is a high-quality, one-component, plasto-elastic acrylic sealant that is ideal for all-purpose construction needs. Its flexible nature allows it to fill and seal cracks in masonry, concrete, terraces, precast blocks, slabs, and brick linings, as well as gaps between various structures like windows, doors, and baseboards. Additionally, it can be used to seal joints in GI/cement pipes, AC/GI sheets, gutters, and flashings. CrackFix provides long-lasting protection against water infiltration, air leaks, and other weather-related damages.





ADMIXTURE

Introducing our innovative line of admixture products designed to enhance the performance and durability of concrete. Our products include CreteCure, a ready-to-use solution that speeds up the curing process while improving strength properties, CorroShield - ST, liquid corrosion inhibiting admixture for steel-reinforced concrete that provides a dual level of corrosion protection to steel, EpoCrete, a cutting-edge solution that enhances the strength and impermeability of mortars and concrete, PlastCrete, an advanced waterproofing admixture that transforms water-soluble compounds into insoluble silicates, PlastRetard, a high-range plasticizer cum retarder for superior quality concrete, BondCrete, a high-quality bonding agent that increases the bonding strength between plaster and old concrete, and BondCrete - PCE, a superplasticizer that enhances the strength and durability of concrete while improving its workability and finish ability.



CRETECURE

CreteCure is a convenient ready-to-use solution that enhances the wear resistance and strength properties of concrete while also speeding up the curing process. This specially formulated product is ideal for use in a wide range of applications, including the curing of concrete in irrigation canals, highways, runways, roofs, cooling towers, pre-cast pipes, slabs, blocks, and sloping structures. With ConcreCure, you can achieve superior concrete performance in less time.

CORROSHIELD - ST

CorroShield - ST is a liquid corrosion inhibiting admixture for steel reinforced concrete which provides dual level of corrosion protection to steel.

EPOCRETE

Cement Grey

EpoCrete is a cutting-edge solution designed to enhance the strength and impermeability of mortars and concrete. This two-component, water-soluble epoxy additive offers a high degree of durability and strength, making it an ideal choice for applications that demand the very best in performance. With EpoCrete, you can achieve outstanding results in construction projects that require high-strength concrete, such as bridges, tunnels, dams, and other critical infrastructure.

PLASTCRETE

PlastCrete is an advanced waterproofing admixture for concrete that transforms water-soluble compounds into insoluble silicates, preventing water from penetrating the concrete structure. It also improves the plasticizing properties of the concrete, preventing segregation and providing a cohesive mix. PlastCrete is an integral part of the concrete mixture, ensuring long-lasting waterproofing protection.





PLASTRETARD

PlastRetard is a cutting-edge product designed for onsite batching plants. It is a high-range plasticizer cum retarder, specially formulated to enhance the workability and strength of concrete. The product is easy to use and offers excellent plasticizing properties, reducing the water content in concrete while improving its flowability. It also acts as a retarder, slowing down the setting time of concrete, which makes it ideal for large concrete pours or in hot weather conditions. With PlastRetard, you can achieve superior-quality concrete that is highly durable and long-lasting.

BONDCRETE-PLAST

PlastBond is a high-quality bonding agent that is specially formulated to increase the bonding strength between plaster and old concrete. It is easy to use and can be added to cement in the recommended dosage to ensure a strong and long-lasting bond. PlastBond is ideal for use in both residential and commercial construction projects, including repair and renovation work.

PROCRETE

ProCrete is a PCE (polycarboxylate ether) based super plasticizer designed to enhance the strength and durability of concrete. With excellent dispersion and slump retention properties. PlastBond - PCE increases the workability of concrete, allowing for better flow and placement while maintaining its consistency. It also improves the finishability of the concrete, resulting in a smoother surface.



STALWART ADVANCE MATERIAL INDS

Application & Business Center, B-120, Ansa Industrial Estate, Saki Vihar Road, Sakinaka, Andheri (E), Mumbai – 400 072.

email: sales@stalwartadvance.com;

web: www.stalwartadvance.com;

customer care: 1800 121 3497